

Q-4 Indiana 9-1-1 Board Report
for the reporting interval ending
November, 2015



data from



1. The map at right page shows the updated status of MEVO and textTTY service platforms. The map shows that text message-FROM-911 is active in 88 counties throughout the state.
2. There are 82 Counties with text-TO-911.
3. Only one county (Lake) is on administrative hold or not yet on the installation schedule due to extended issues with their consolidation. The Lowell post of the Indiana State Police have deployed text-TO-911, and covers this region. This post has also developed operating protocols for the rest of the state police locations.
4. St Joe County (South Bend) got a new director, and his first official action was to deploy text-TO-911 service. Barry coordinated a public educational outreach, and the county had a successful launch.
5. Our work continues to expand and upgrade the ESiNet to support the eCats data collection platform, and this detail is now shown on the map as well. This is an ongoing project, with a goal of readiness by the end of the year to capture 2016 data.

IN911 Network

- MEVO/ texTTY status**

-  text-For-911 in use
-  text-TO-911 pending

☒ Ready
☐ Pending

IN911 statewide status

Section
ation

atus

se
ding

section B - INdigital provided network status and trends

6. There are no issues to report for the overall operation of the network.
7. Indigital ESiNet service enhancements - We made a number of improvements in the architecture of the NG-ALi platform.
 - a. TCS had a (somewhat) extensive outage in their ALi data frame relay network, which triggered an unplanned service improvement project.
 - i. We plan to move our connection with TCS to an IP connection arrangement in 2016.
 - b. Intrado now provides service to the NG-ALi platform via IP connections, and we have a number of additional service improvement projects planned for 2016.

We had planned to convert the NG-ALi platform to IP based links, and matters simply escalated as work to restore service became a priority. We will be working with other software companies on other projects for expanded support of geospatial routing within the G-15 platform.

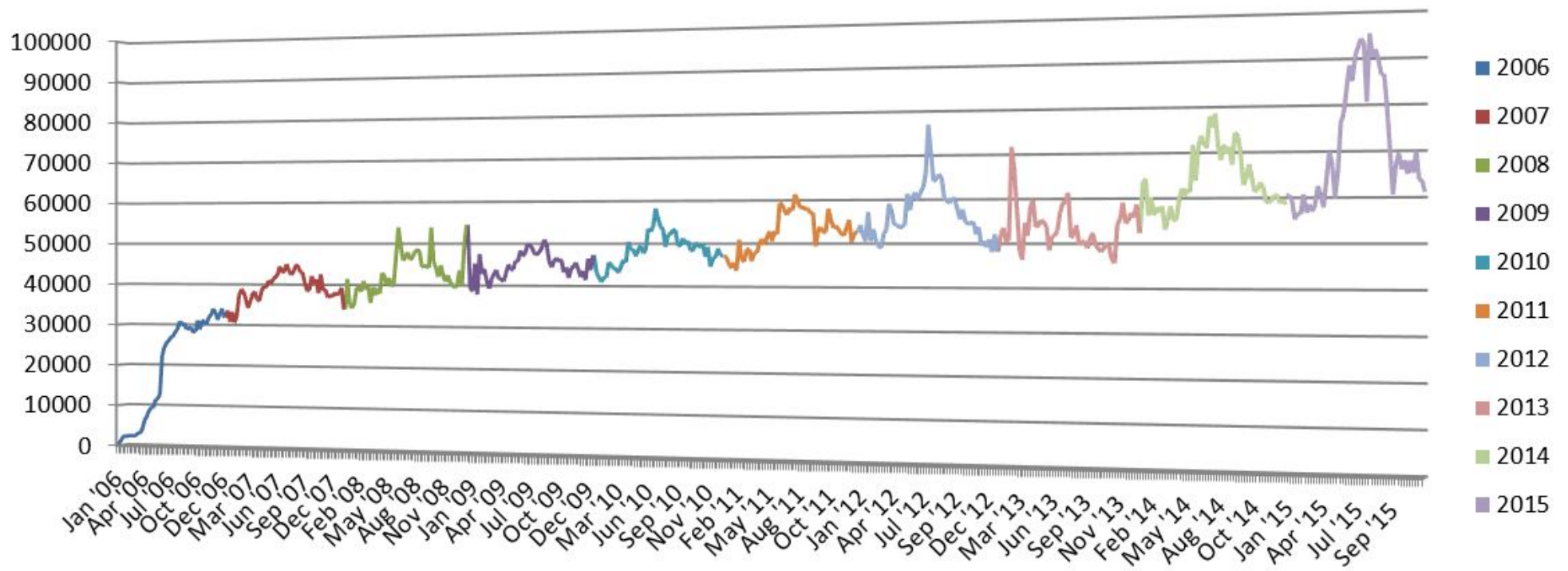
These pilot projects are in prep for field tests we have planned for later this year with the wireless carriers.

8. Overall network stats – Overall call volumes continue to show seasonal trends. There were no unusual call patterns in this reporting period (other than the Marion County text service launch). The charts on the following pages show:
 - a. texTTY usage trends – As the charts on pages 8 thru 9 show, text from 911 is a heavily used service. Many agencies now use text as the primary method of confirming valid requests for service.

IN911 Network call totals

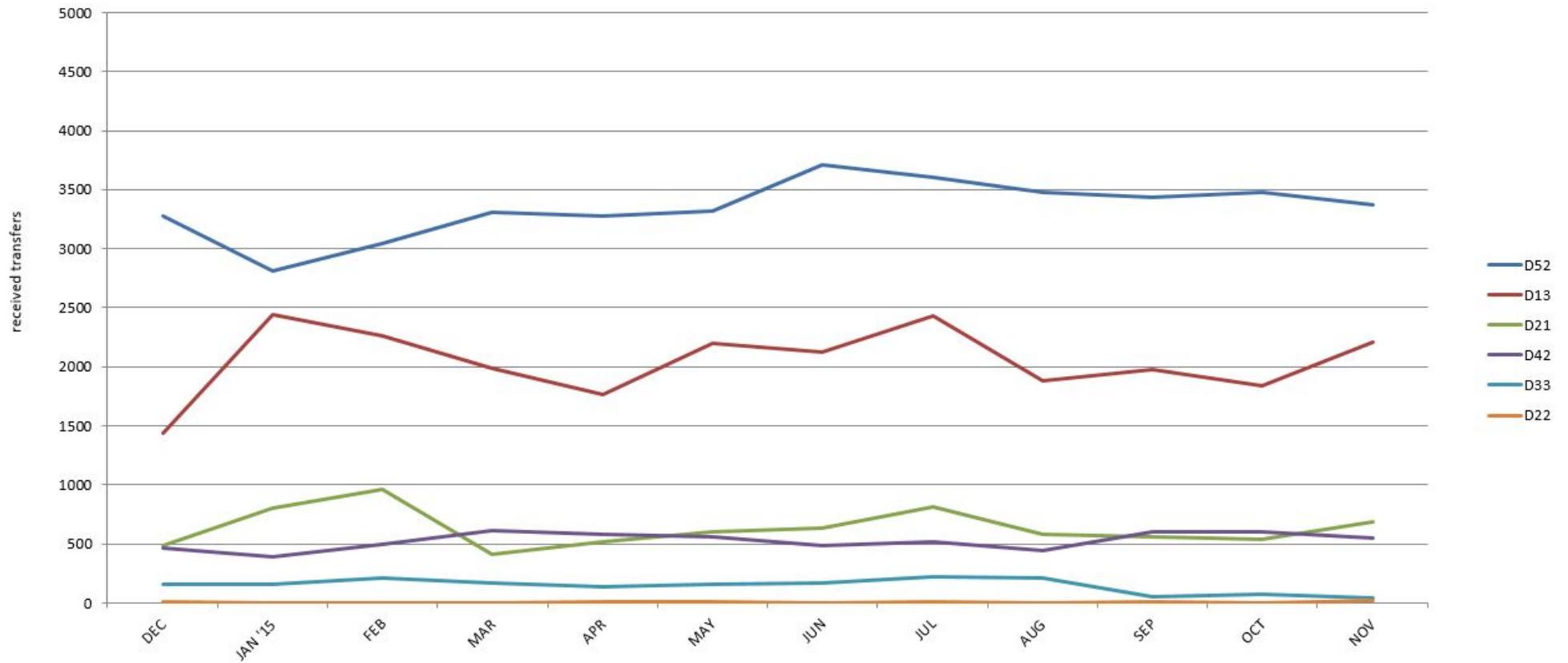
January 2006 - November 2015

Jan. '06 - Nov. '15 Total: 25,389,192



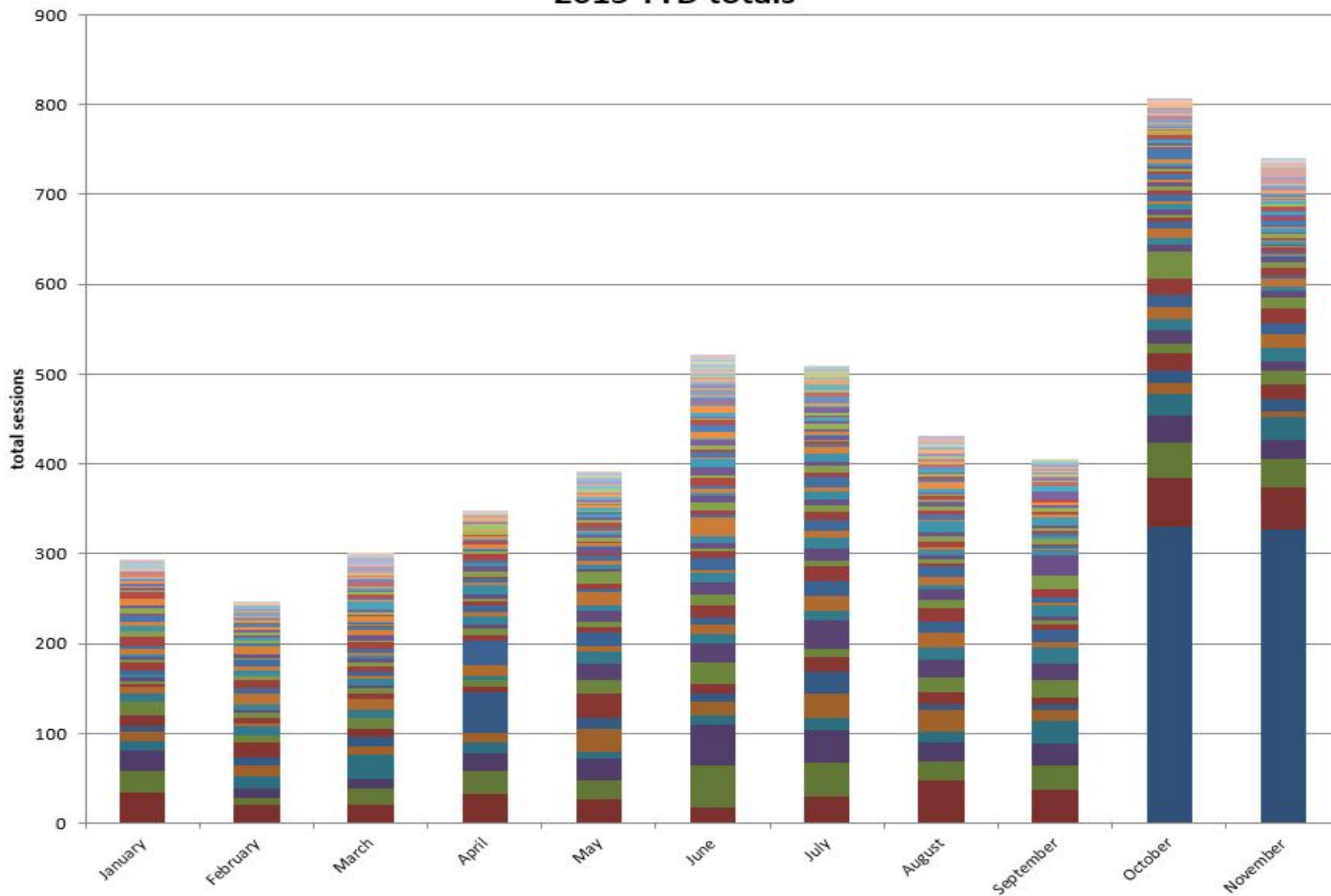
D 52 = Indianapolis
D 13 = Lowell
D 21 = Indiana Toll Road
D 42 = Versailles
D 33 = Bloomington
D 22 = Fort Wayne

December 2014 to November 2015



9. Text-for-911 volumes are consistent with the seasonal trends we see for voice calls.

text TO 911
2015 YTD totals



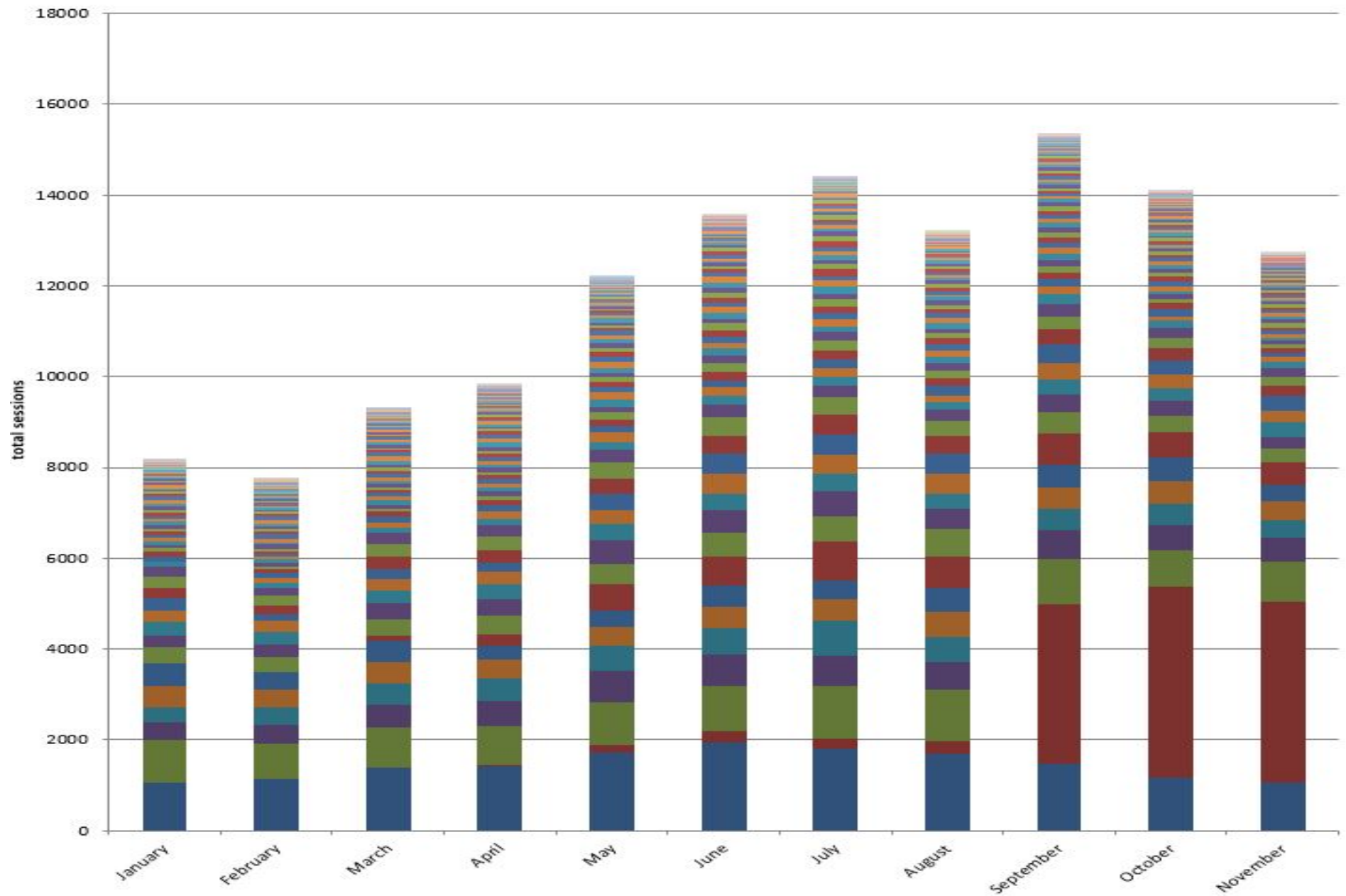
10. Text TO 911 usage matrix. Marion County had an immediate success with the launch of their service.

100+		40-99		10-39		<10		Active - No Usage
PSAP	COUNT	PSAP	COUNT	PSAP	COUNT	PSAP	COUNT	PSAP
Marion County	657	Clark County	84	Wabash County	38	Brown County	9	Randolph County
Elkhart County	369	Grant County	81	Henry County	37	Franklin County	9	Spencer County
Allen County	303	Boone County	80	Shelby County	37	Rush County	9	
Tippecanoe	265	Perry County	80	Whitley County	37	Tipton County	9	
Bartholomew County	182	Delaware County	73	Cass County	36	Vermillion County	9	
Vigo County	164	Floyd County	71	Harrison County	35	Parke County	8	
Kosciusko County	156	Clinton County	67	Adams County	34	Owen County	7	
Monroe County	156	Hancock County	63	Putnam County	34	Pike County	7	
Porter County	151	Jackson County	55	Jefferson County	31	Benton County	5	
Hamilton County	133	Jennings County	55	Posey County	30	Warrick County	5	
LaPorte County	129	Miami County	49	Dubois County	29	Morgan County	3	
Madison County	120	Marshall County	48	Carroll County	27	Switzerland County	2	
Johnson County	117	Knox County	44	Fulton County	27	Orange County	1	
Wayne County	115	Dekalb County	42	Howard County	26	Washington County	1	
Montgomery County	102	Lawrence County	42	Dearborn County	25			
				Wells County	23			
				Fountain/Warren County	22			
				Huntington County	22			
				Steuben County	22			
				Pulaski County	21			
				Ripley County	19			
				Crawford County	18			
				Daviess County	18			
				Decatur County	18			
				Gibson County	17			
				Starke County	17			
				Clay County	16			
				Jay County	16			
				Noble County	16			
				White County	16			
				Scott County	14			
				Fayette County	13			
				Martin County	12			
				Sullivan County	12			
				LaGrange County	11			
				Blackford County	10			
				Ohio County	10			
				St. Joseph	10			

11. Text FROM 911 usage matrix. Many of the counties have fully adopted text for certain use cases in their operations.

2000+			500-1999			100-499			<100		Active - no usage
PSAP	COUNT		PSAP	COUNT		PSAP	COUNT		PSAP	COUNT	PSAP
Elkhart County	15870		Hancock County	1704		Pike County	458		Dearborn County	98	Vanderburgh County
Marion County	12638		Boone County	1567		Clay County	448		Union County	92	
Allen County	10380		Dubois County	1539		Decatur County	444		Sullivan County	91	
Monroe County	6173		Noble County	1517		Harrison County	407		Johnson County	64	
Clark County	5496		Spencer County	1324		Huntington County	403		Benton County	62	
Tippecanoe County	5025		Steuben County	1321		Ripley County	344		Blackford County	62	
Vigo County	4854		Fountain/Warren Cour	1225		Jay County	329		Warrick County	39	
Hamilton County	4849		Lagrange County	1163		Pulaski County	309		Shelby County	38	
Porter County	4738		Marshall County	1140		Putnam County	293		Floyd County	32	
Bartholomew Cour	4225		Jackson County	1081		Franklin County	287		Washington County	27	
Wayne County	3588		Scott County	1070		Brown County	236		Johnson County	26	
Grant County	3566		Cass County	1044		Switzerland County	226		Parke County	24	
LaPorte County	3548		Fulton County	1041		Randolph County	222		Martin County	22	
Montgomery Cour	3382		Jennings County	1018		Knox County	215		Fayette County	19	
Kosciusko County	3218		Miami County	953		Whitley County	190		Vermillion County	12	
Crawford County	2578		Clinton County	946		Hendricks County	179		Orange County	10	
			Wabash County	929		Starke County	168		Madison County	6	
			Dekalb County	911		Gibson County	155		Rush County	4	
			Carroll County	851		Newton County	137		Jasper County	3	
			Perry County	832		Daviess County	127		St. Joseph County	2	
			Jefferson County	785		Green County	121				
			White County	778		Ohio County	115				
			Owen County	721		Tipton County	111				
			Posey County	656		Howard County	104				
			Morgan County	646							
			Delaware County	624							
			Adams County	614							
			Wells County	575							
			Lawrence County	572							
			Henry County	549							

**texTTY FROM 911
2015 YTD totals**



section C - industry stakeholders

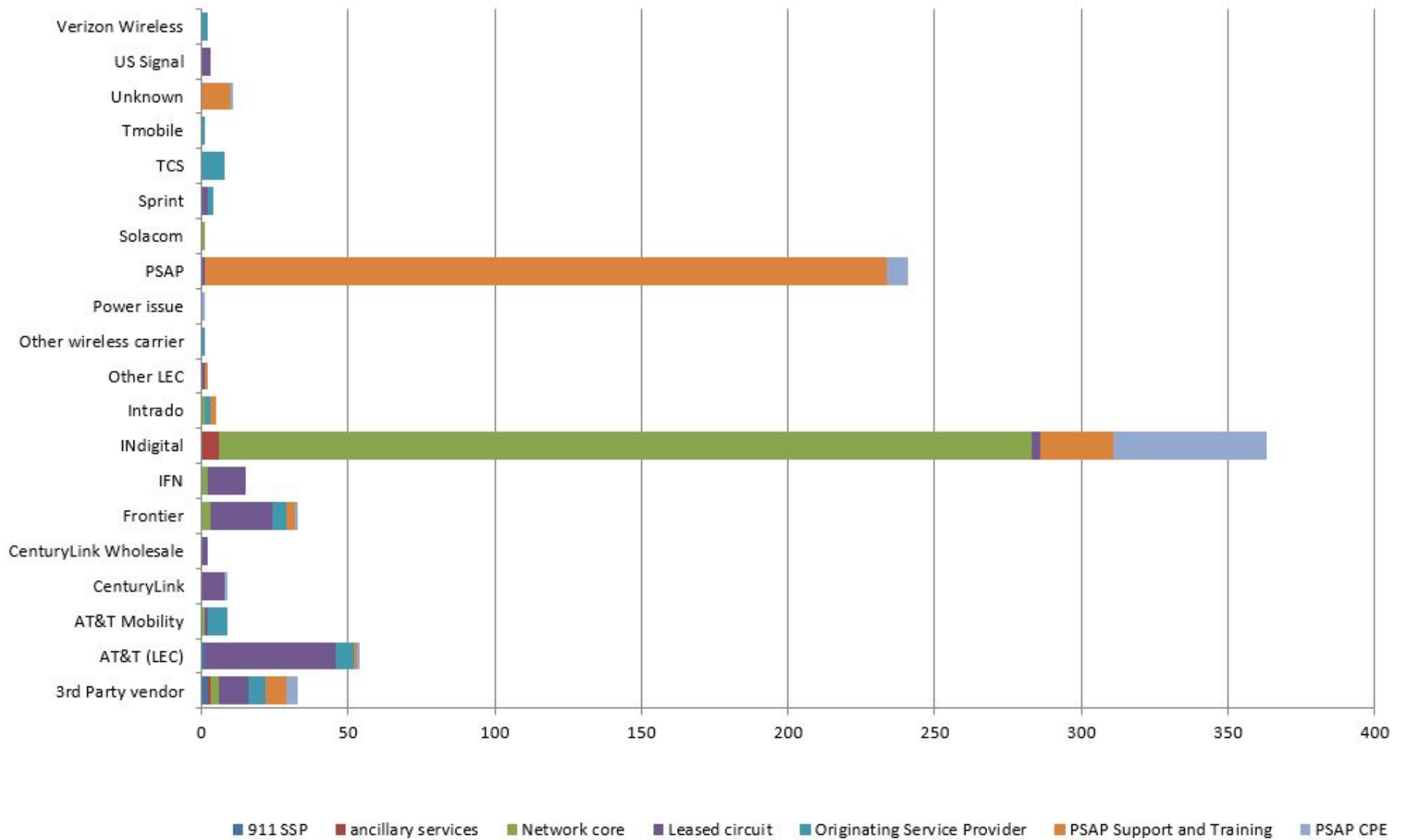
- 12. **Wireless carrier status** – There are no issues to report.
- 13. **Adjacent state connectivity** – INdigital and Frontier continue to develop the Illinois border transfer project. Several new Illinois border counties will be getting 911 service for the first time.
- 14. **Regulatory matters** – There are no issues to report.
- 15. **Inter-agency agreements** – There are no issues to report.
- 16. **Other stakeholders** - There are no issues to report.

section D - network quality

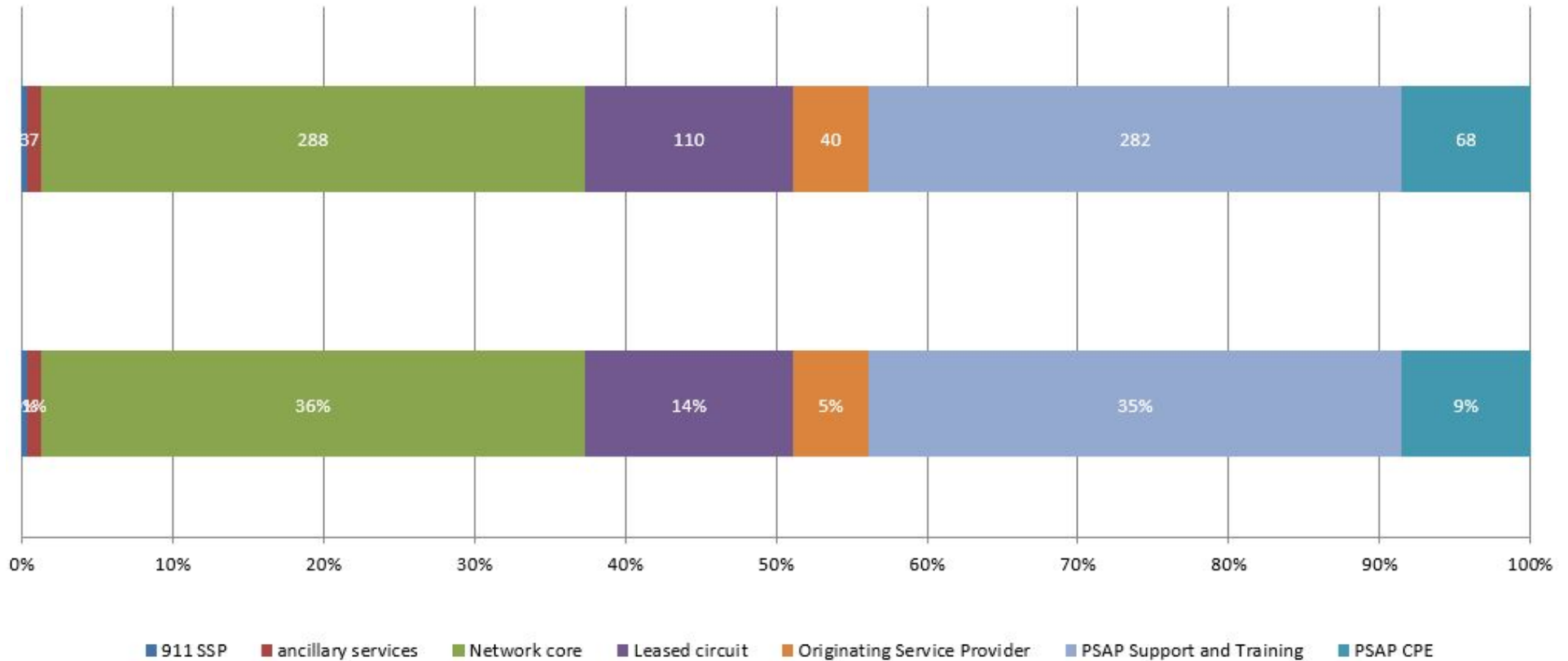
- 17. **G-11 network status** - There are no issues to report.
- 18. INdigital has returned to a normal number of help desk calls in this reporting cycle.
 - a. For comparison, trouble ticket trending for prior periods is shown below:

in 2014 – 734	in 2013 – 275
in 2012 – 292	in 2011 – 331

IN911 network trouble tickets 2015 YTD by category and source



IN911 network trouble tickets 2015 YTD by functional domain



19. Trouble ticket analysis – These graphs show the ticket breakdown by category. INDigital offers these observations and comments:

- a. The majority of the Network Core tickets were generated by the SLA compliance platform. This quantity is in the normal expected range.
- b. PSAP originated tickets are within the normal range (we resolve every ticket).

The remaining tickets were minor issues related to normal maintenance, and tracking and resolving matters related to routine testing for other service compliance matters.